

DVOETAŽNI STAN BR. 4 - II. KAT – III. KAT (ETAŽA 5)**II. KAT**

- stubište	7,45 m ² NKP
- dnevni boravak	51,00 m ² NKP
- ulazni hač	11,00 m ² NKP
- blagovaona	19,10 m ² NKP
- kuhinja	9,00 m ² NKP
- WC	3,20 m ² NKP
- garderoba	2,00 m ² NKP
- interno stubište	7,20 m ² NKP
- lođa	8,70 m ² NKP
Σ	118,45 m² NKP

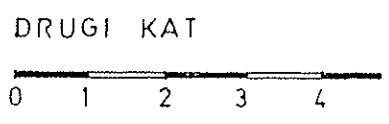
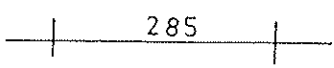
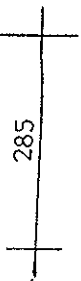
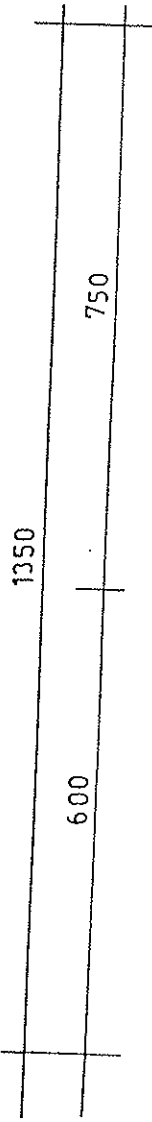
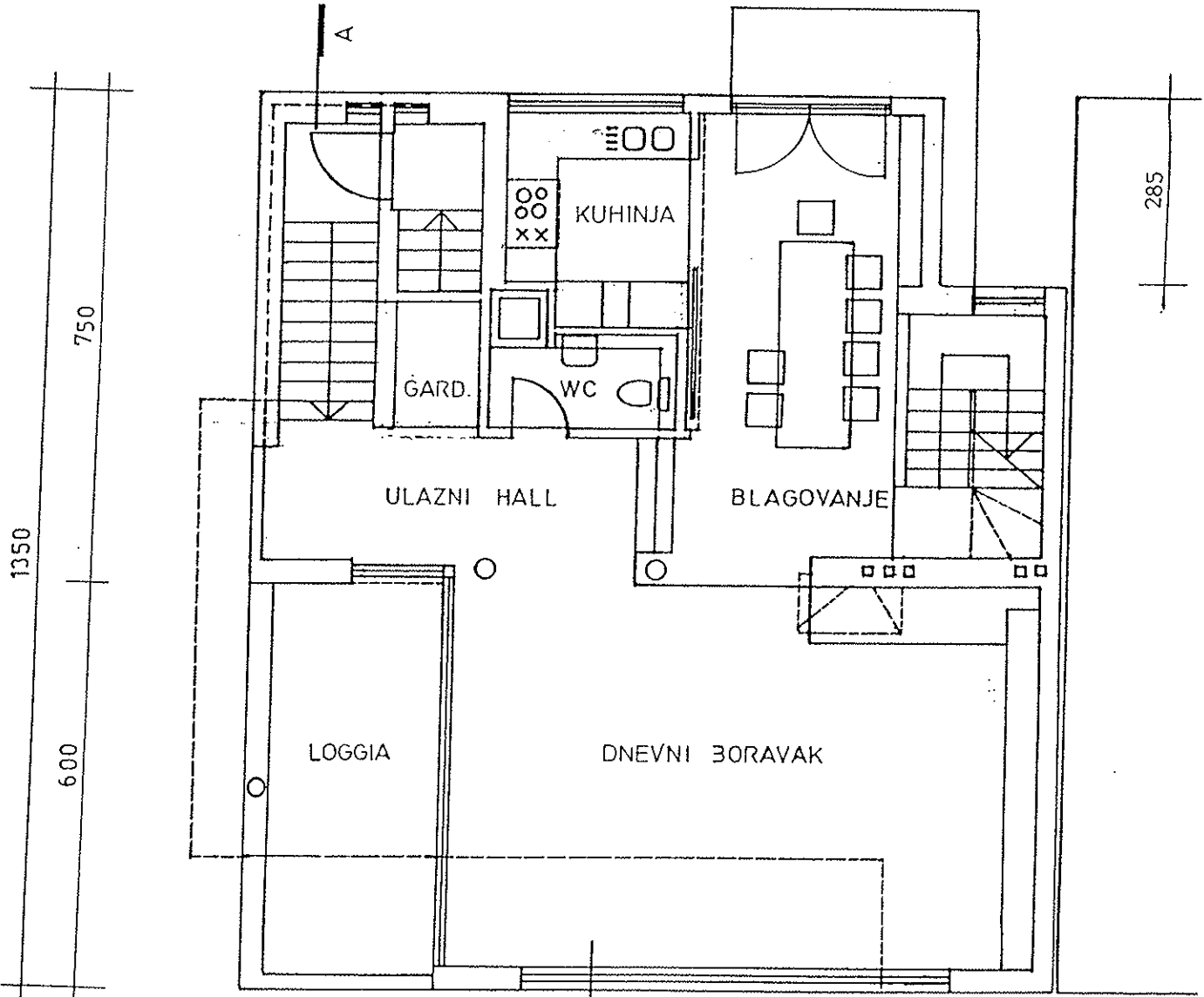
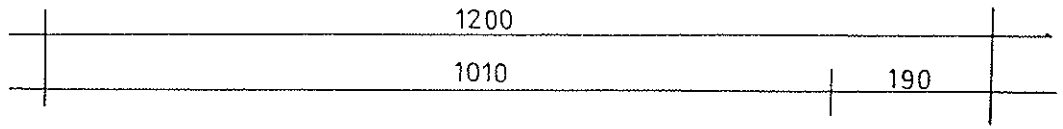
III. KAT

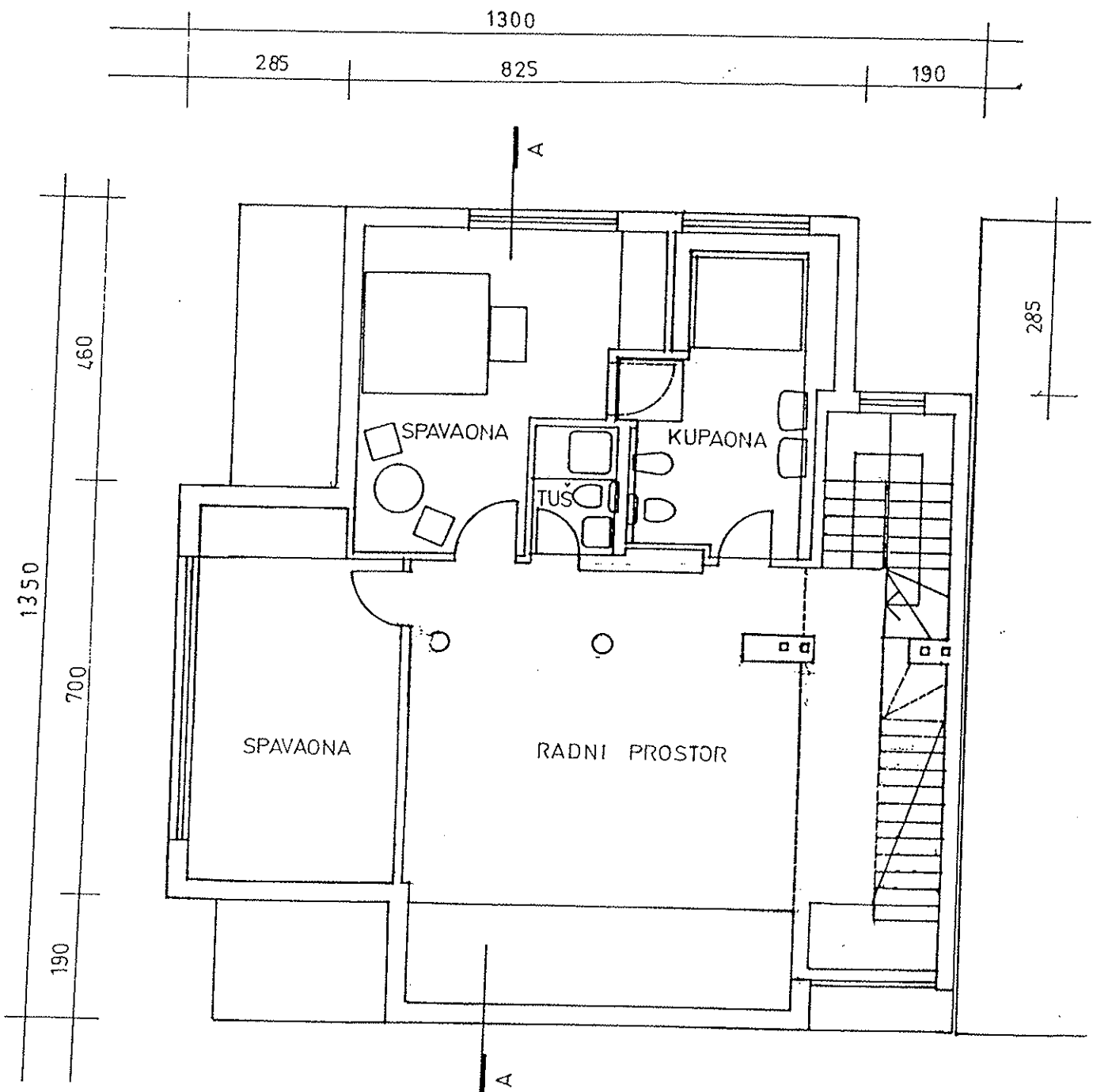
- radni prostor	65,75 m ² NKP
- spavaća soba	19,50 m ² NKP
- kupaona	10,75 m ² NKP
- tuš kupaona	2,30 m ² NKP
- interno stubište	7,20 m ² NKP
Σ	105,50 m² NKP

RAVNI KROV – POTKROVLJE

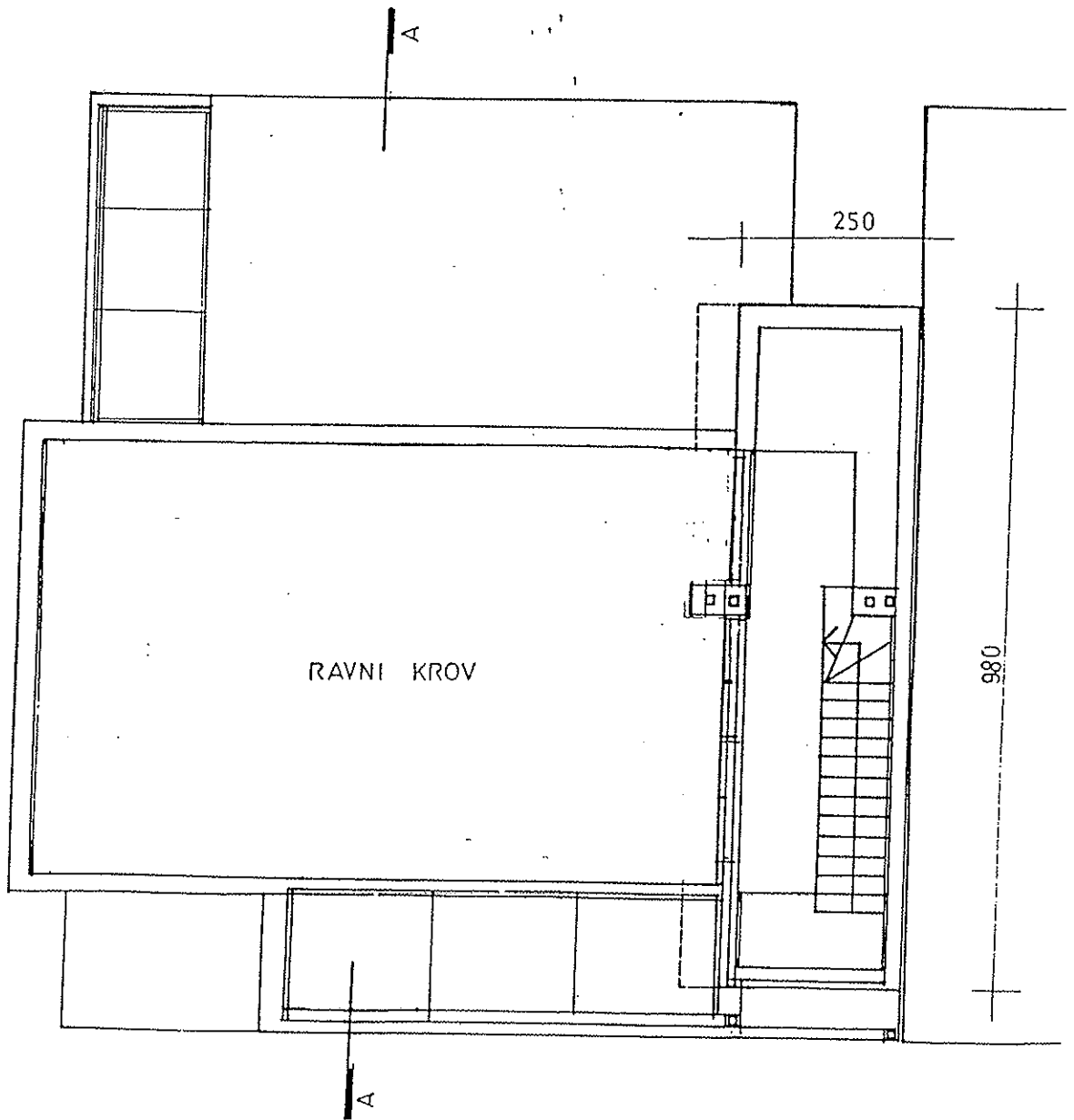
- terasa k = 0,25	14,94 m ² NKP
- interno stubište + galerija	24,00 m ² NKP
Σ	38,94 m² NKP

SVEUKUPNO STAN br. 4**262,89 m² NKP**





TREĆI KAT
0 1 2 3 4



KROV-KROVNA TERASA

